

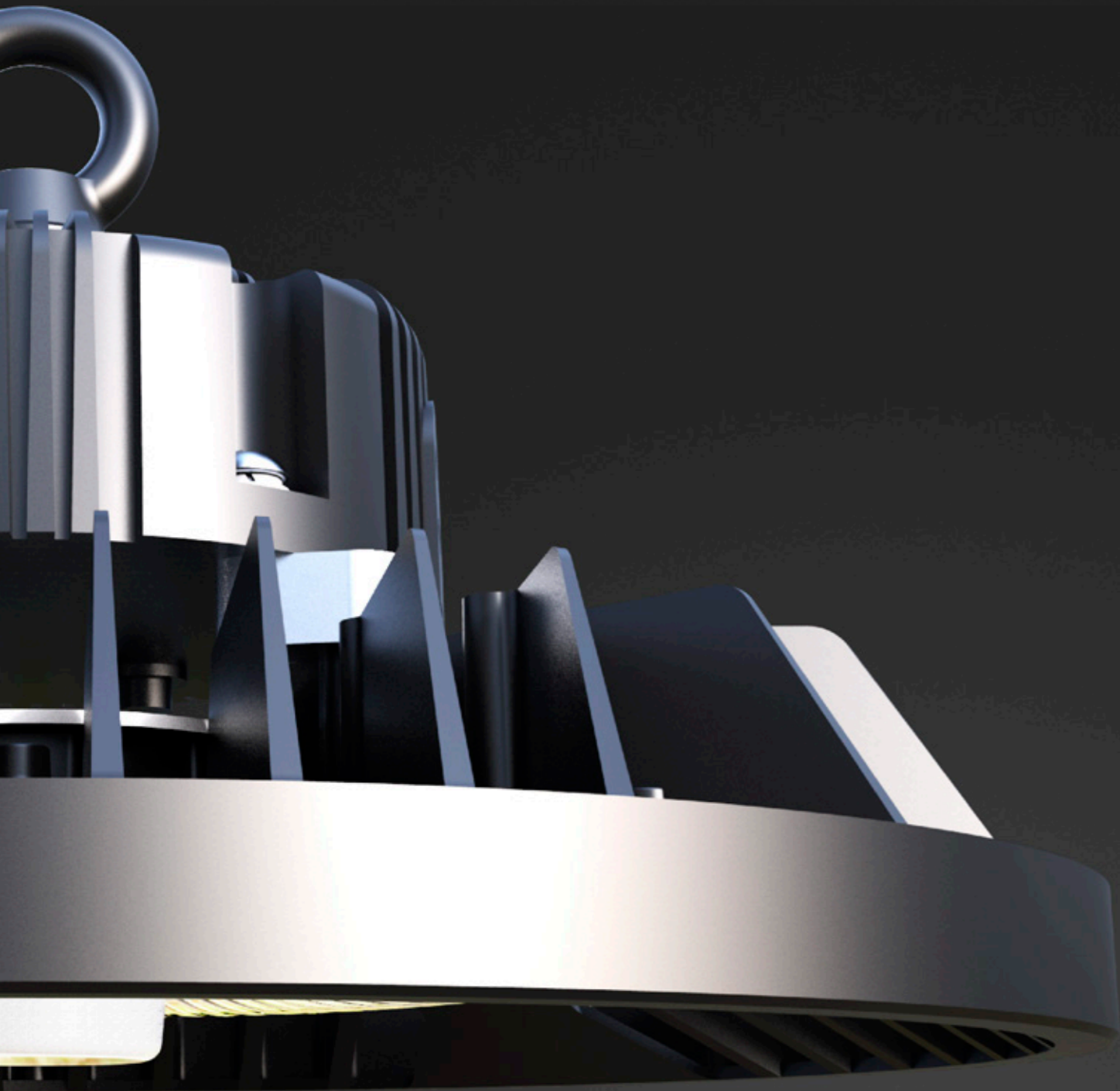
E-LITE semicon

AURORA™ SERIES

LED High Bay

**Dedicated
Wattage**





UNLIMITED VALUE

The Aurora round LED high bay light offers excellent energy efficiency.

It is ideal for point-to-point replacement in retrofit projects, as the die-cast aluminium heat sink and corrosion-resistant polyester powder coated body can operate perfectly in ambient temperatures up to 50°C.

This luminaire is available with emergency options for motion and daylight sensor integration.

E-LITE semicon / Hello@elitesemicon.com / www.elitesemicon.com



The die-cast aluminum heat sink operates perfectly at ambient temperatures up to 50°C / 122°F



Corrosive resistant polyester powder coat finish body.



Integrated motion and daylight sensor available

FEATURES

E-LITE semicon / Hello@elitesemicon.com / www.elitesemicon.com



UL listed for safety and DLC Premium 5.1 for energy rebates.

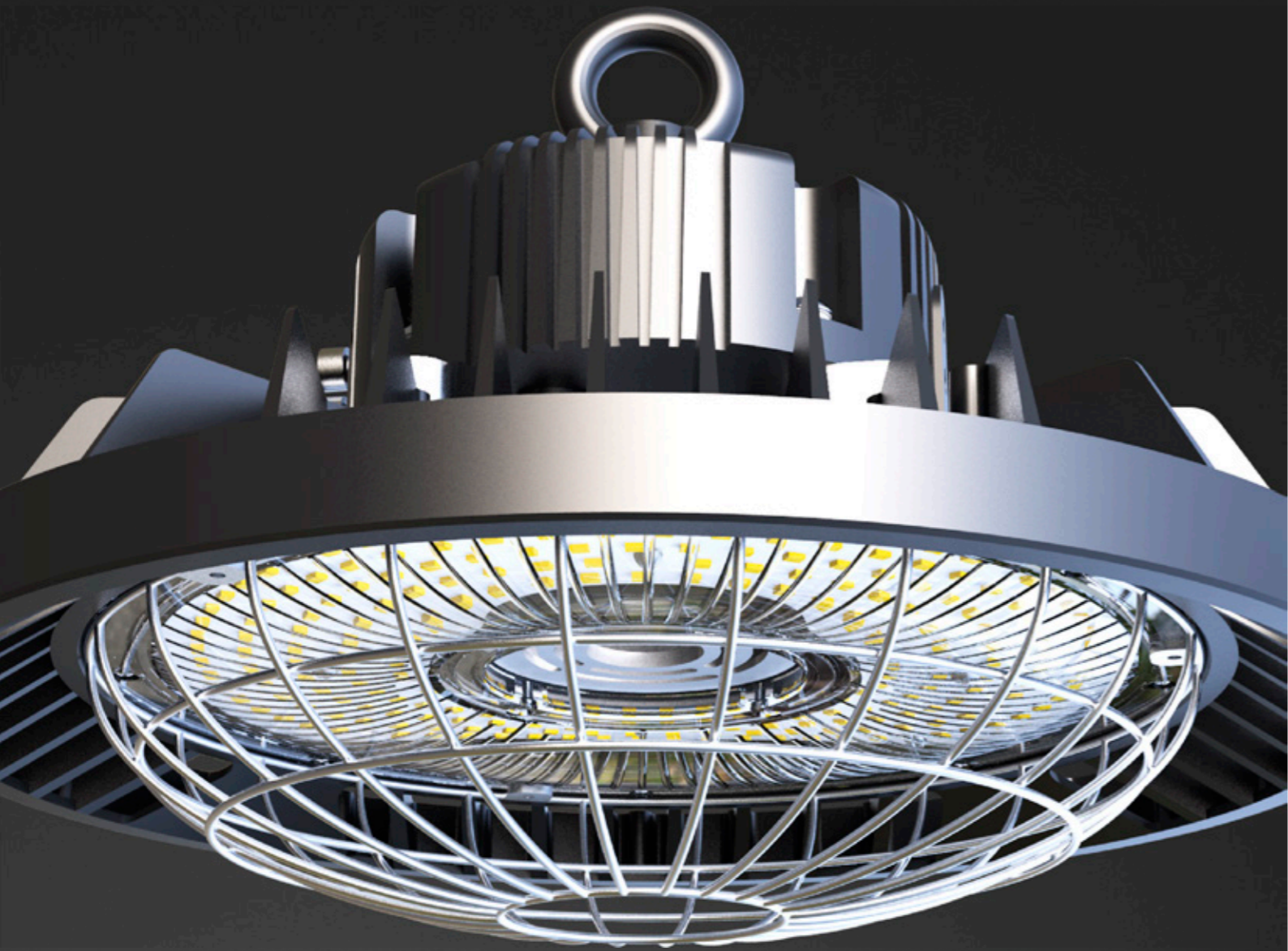


Multiple lens at choice



Waterproof IP66 design, suitable to damp & wet location.





PERFORMANCE



Philips Lumileds



4500~5500K (Standard)
2500~6500K (Optional)



≥70



L70>120,000 Hours



100-277 VAC, 100-347 VAC, 277-480 VAC



0.95 min



IP66



IK10



Corrosive resistant polyester powder coat finish



Operating Temperature:-45°C to +50°C (-49°F to 122°F)
Storing Temperature:-45°C to +80°C (-49°F to 176°F)



15% to 95% RH



CB

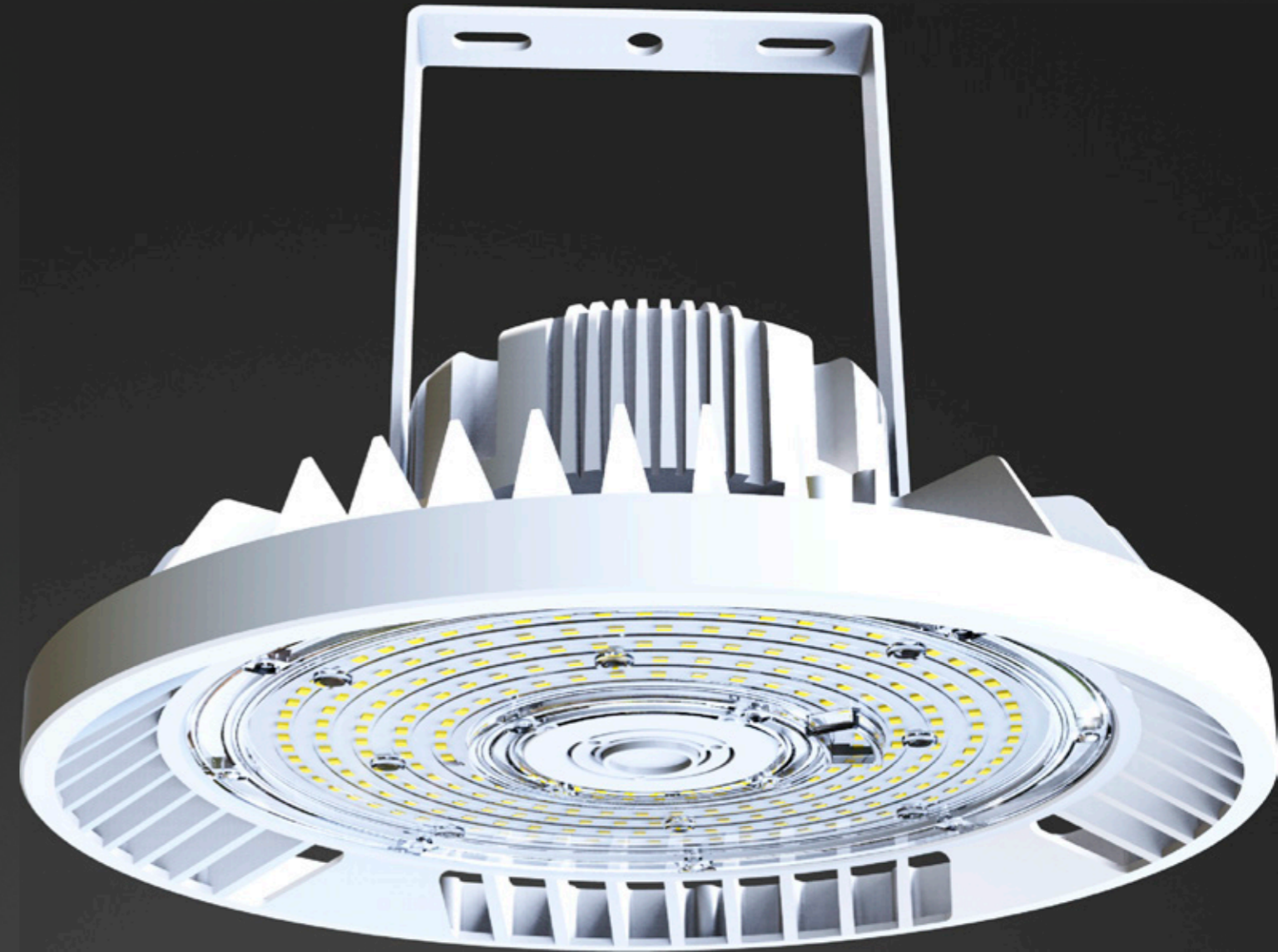


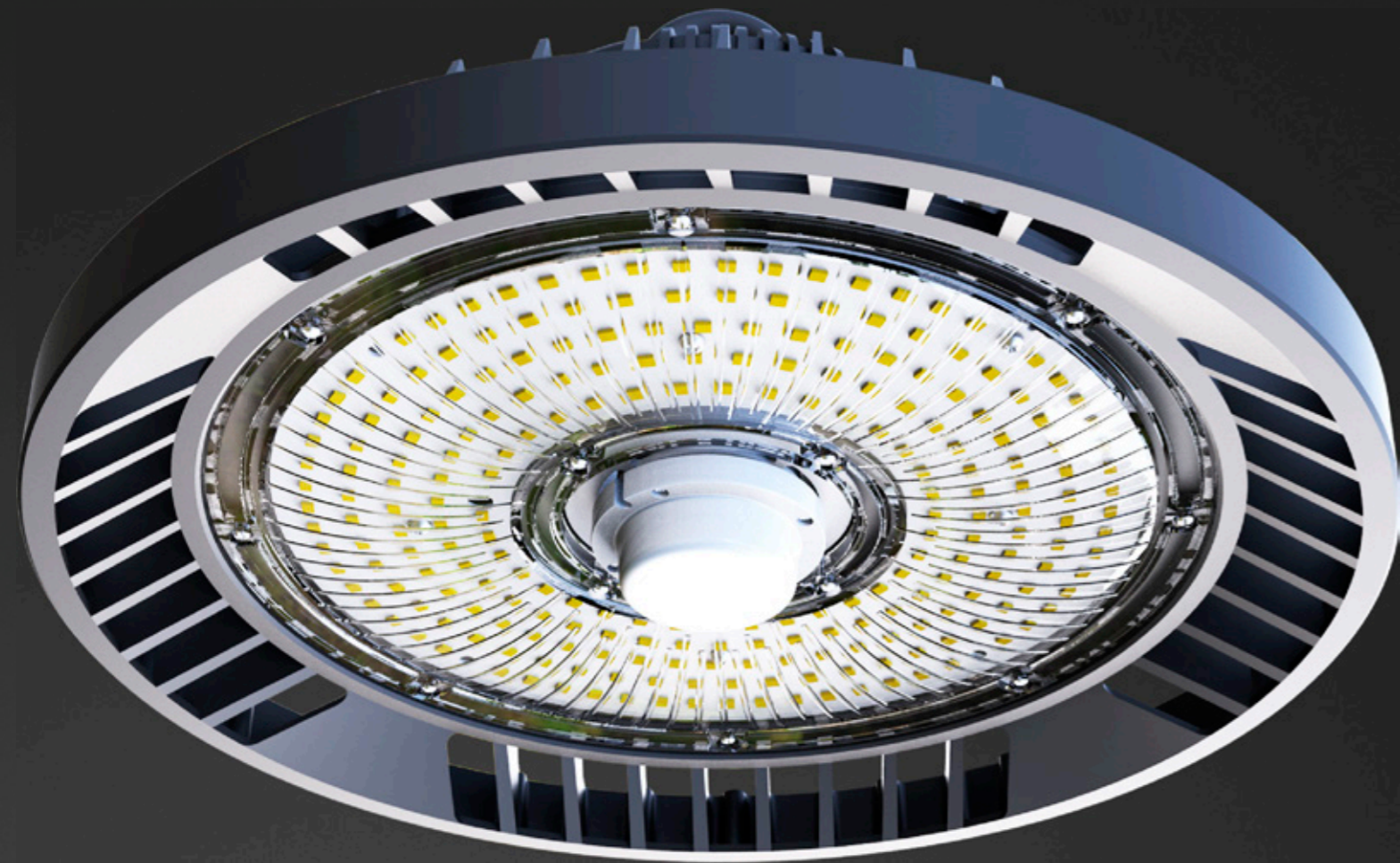
CE



SPECIFICATIONS

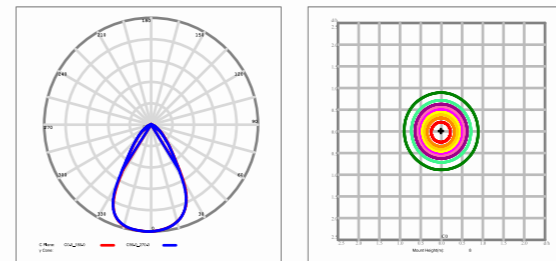
Part#	Power	Efficacy(IES)	Total Lumen	N.W	CRI	LED Chip	Product Dimensions
EL-AUHB-100	100W	150LPW	15,000lm	2.6kg/5.7lbs	≥70	Philips Lumileds	280×280×169mm 11×11×16.7in
EL-AUHB-150	150W	150LPW	22,500lm	2.6kg/5.7lbs	≥70	Philips Lumileds	280×280×169mm 11×11×16.7in
EL-AUHB-200	200W	150LPW	30,000lm	2.6kg/5.7lbs	≥70	Philips Lumileds	280×280×169mm 11×11×16.7in
EL-AUHB-240	240W	145LPW	34,800lm	3.0kg/6.6lbs	≥70	Philips Lumileds	311×311×169mm 12.2×12.2×6.7in
EL-AUHB-300	300W	150LPW	45,000lm	5.3kg/11.7lbs	≥70	Philips Lumileds	382×382×182mm 15×15×7.2in



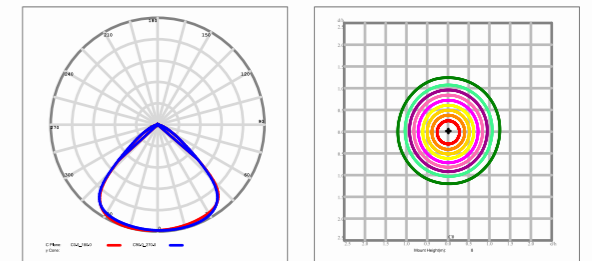


PHOTOMETRICS

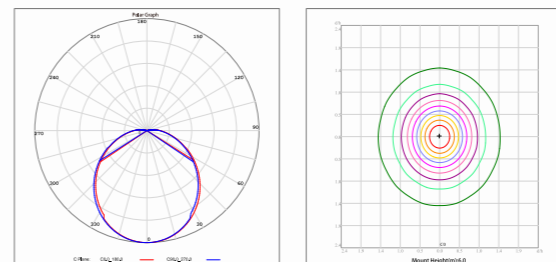
60° Ribbed Lens



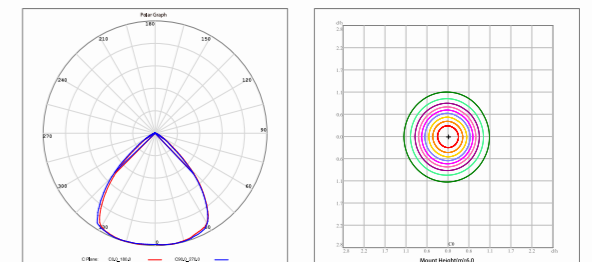
90° Ribbed Lens



120° Diffused Dome Lens



90° Reflector



Future is Now Smart is Easy

Ready socket for universal plug-and-play motion sensor.

Dimming Control



① With sufficient ambient light, the sensor does not switch on the lamp.

Setting
Daylight sensor: 10lux/30lux/50lux;



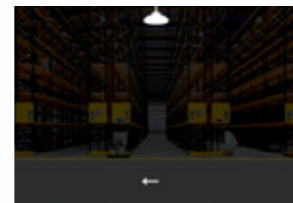
② With a low light level, the sensor switches on the lamp when motion is detected.

Setting
Detection sensitivity:
20%/50%/75%/100%;
Hold-time:
10s/1min/5min/10min/15min/20min/
30min/60min;

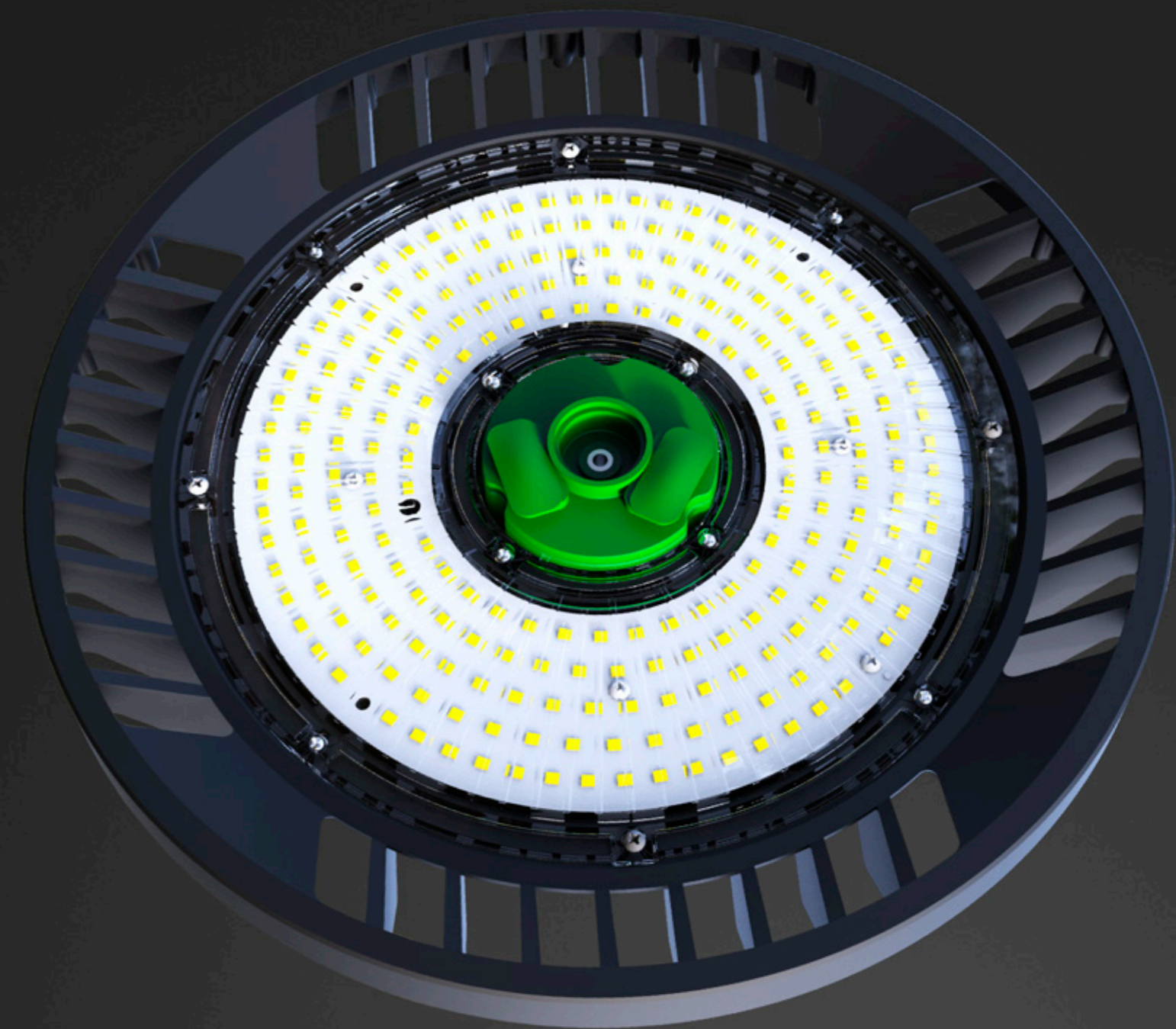


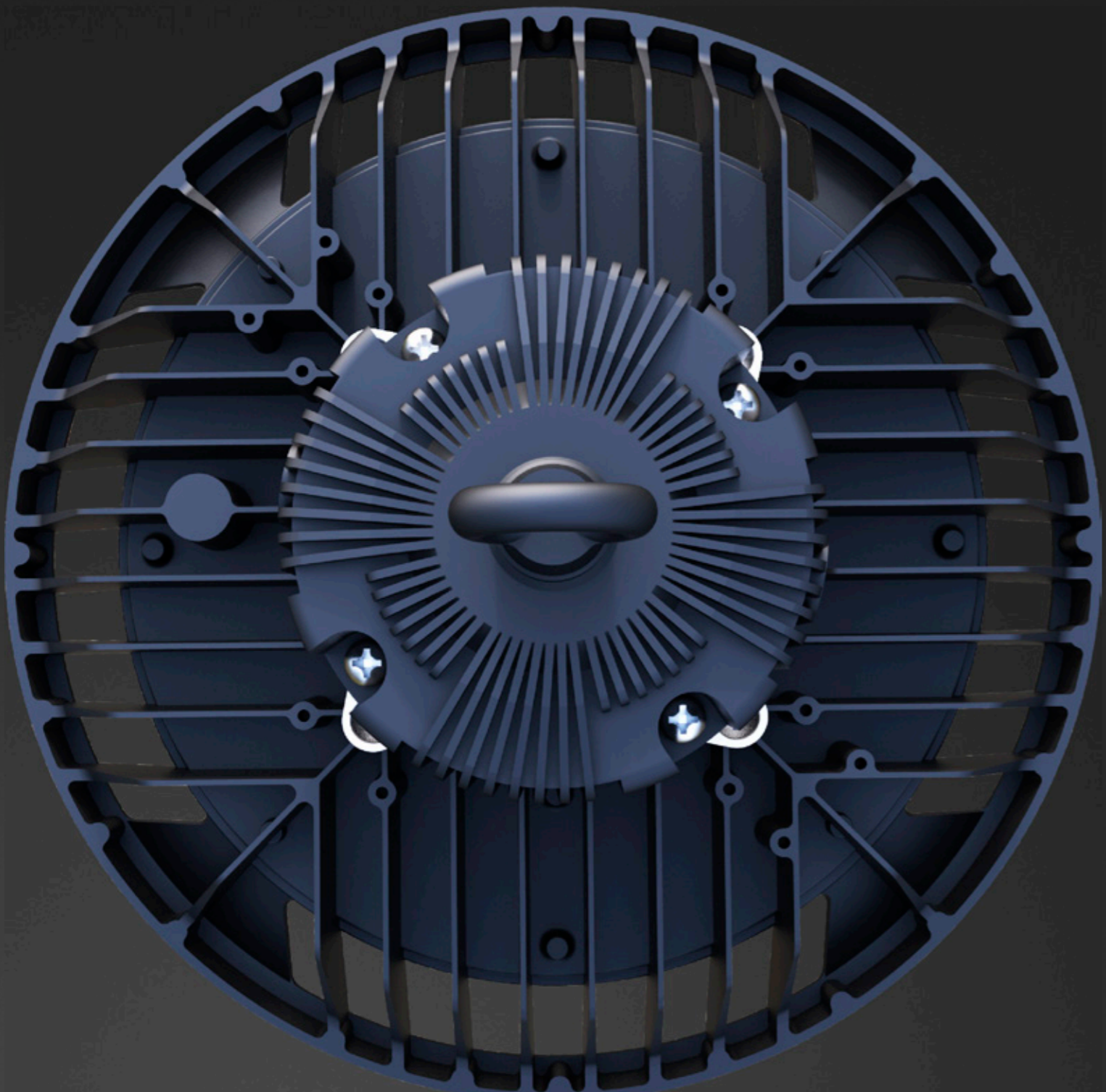
③ After hold time, the sensor dims the lamp at a low light level if no new motion trigger.

Setting
Stand-by dimming level:
0%/10%/30%/50%;
Stand-by period:
1min/30min/60min/+∞



④ After stand-by period, the sensor switches off the lamp if no motion is detected in its detection zone.





INSTALLATION

For high performance and long term reliability, the light should be installed in free air.

Hook Mounting

- Fix the hook on the light. (Clockwise rotation)
- Use an electric drill to bore a hole in the wall.
- Install the hanger to the wall.
- Fix the hook onto the hanger and complete installation.

U Bracket Mounting

- Use an electric drill to bore 2 holes in the wall.
- Set the expansion screws to the existing drilling holes.
- Install the bracket to the wall.
- Use a wrench to reverse hexagon nut adjust the requested angle.



Hook / Hang Ring



Standard U Bracket

