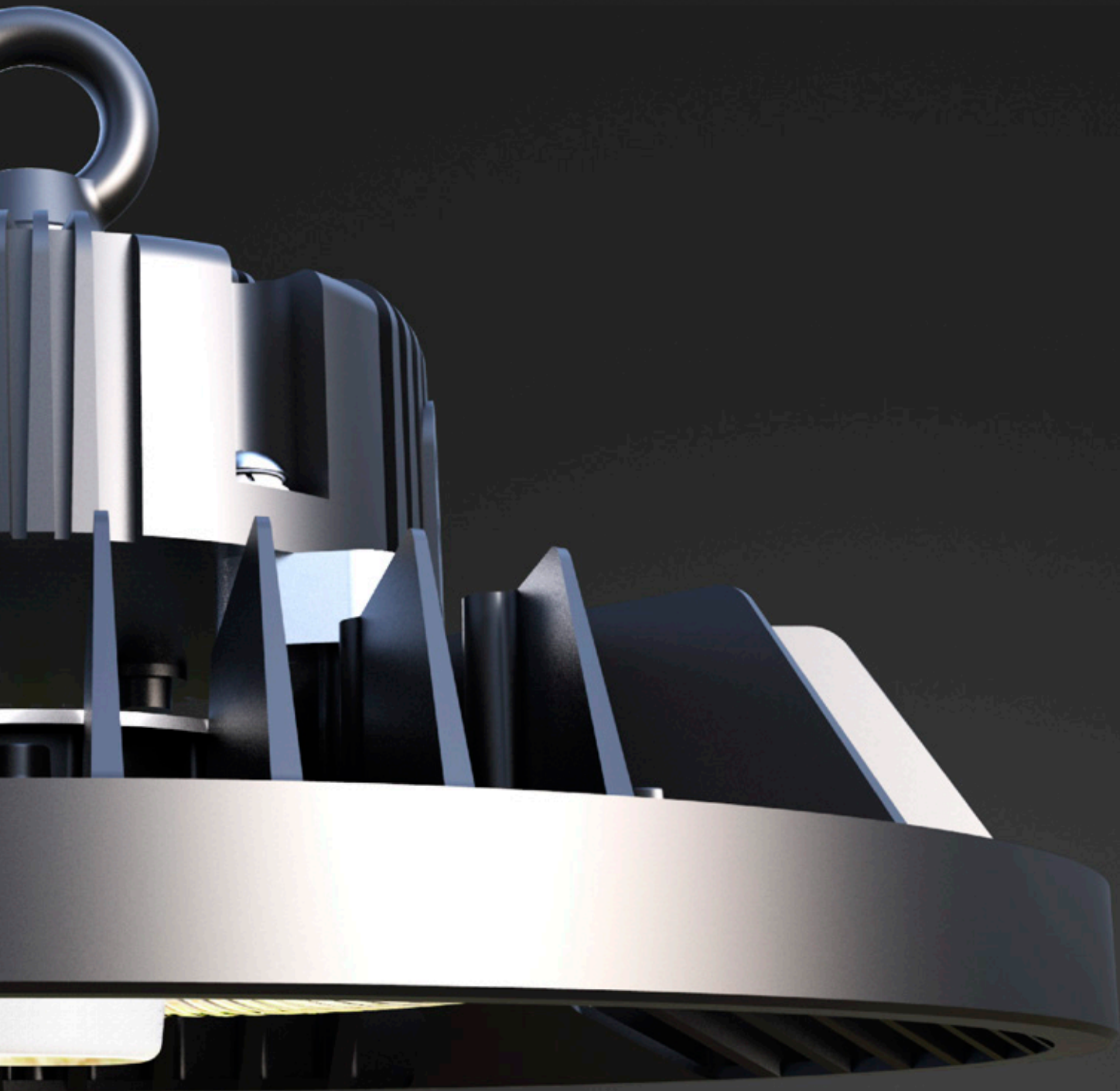


E-LITE semicon



AURORATM
SERIES
LED High Bay
Multi-Wattage
Switchable



EXTRAORDINARY SKU REDUCTION

Elite's newest generation of Aurora round LED high bays feature Power Select technology.

This luminaire supports end-users to select among three field-adjustable lumen outputs with a simple switch. The flexible tool provides significant SKU reduction and increase flexibility and convenience in the field.

E-LITE semicon / Hello@elitesemicon.com / www.elitesemicon.com



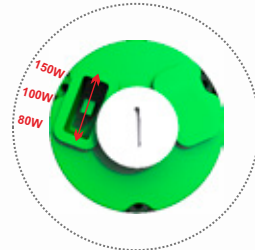
The die-cast aluminum heat sink operates perfectly at ambient temperatures up to 50°C / 122°F



Corrosive resistant polyester powder coat finish body.



Integrated motion and daylight sensor available



Easy dip switches for power selection

FEATURES

E-LITE semicon / Hello@elitesemicon.com / www.elitesemicon.com



UL listed for safety and DLC Premium 5.1 for energy rebates.

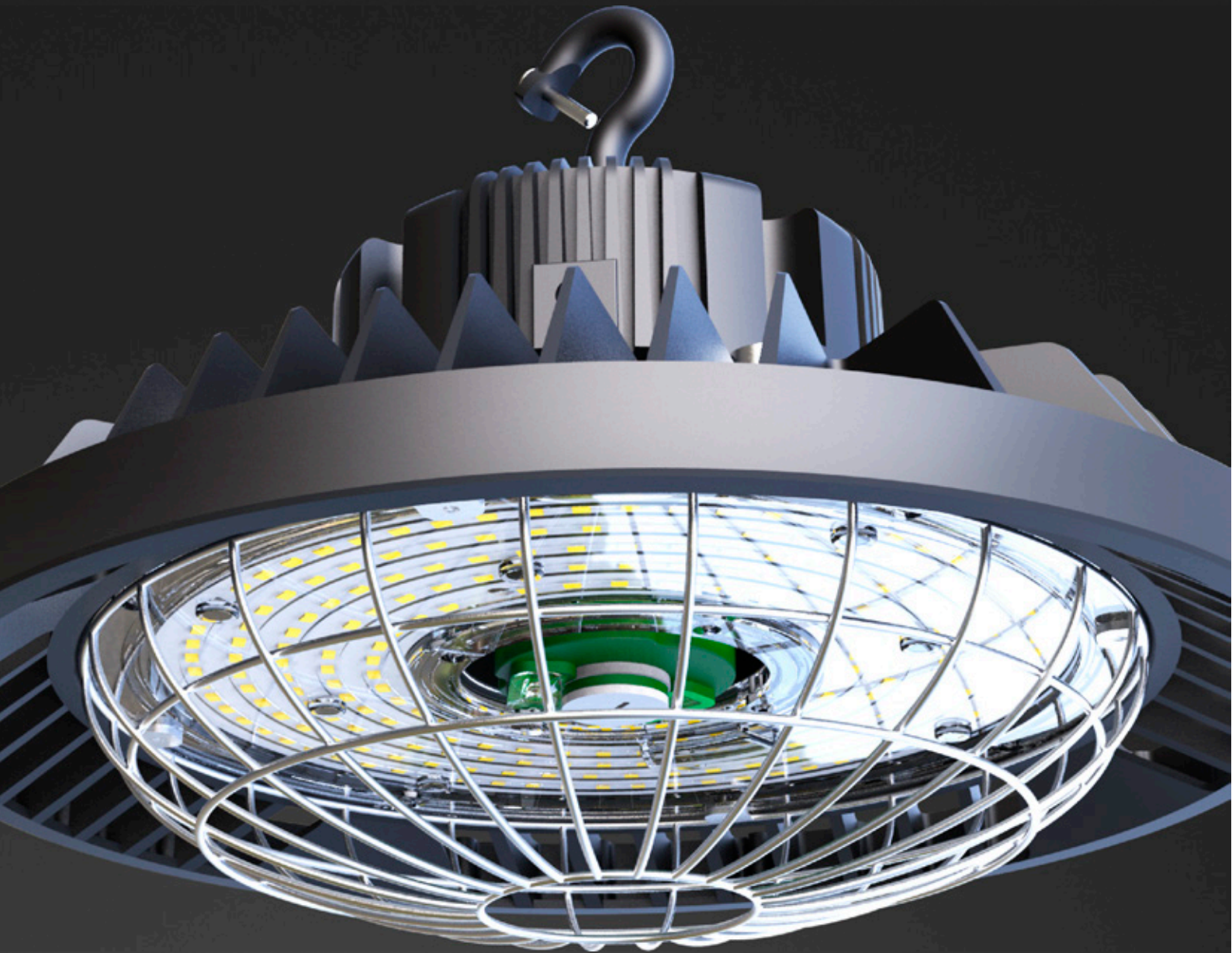


Multiple lens at choice



Waterproof IP66 design, suitable to damp & wet location.





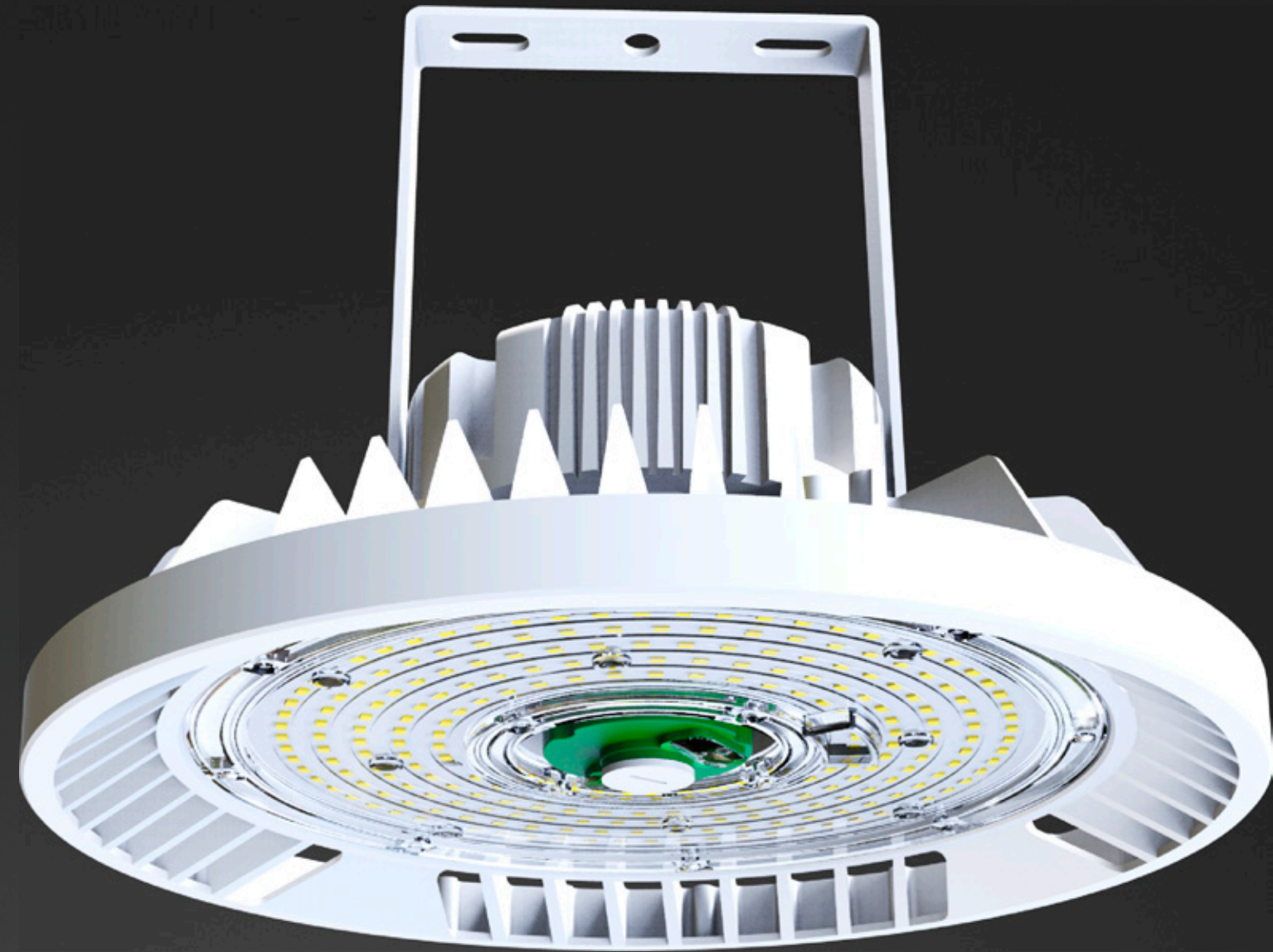
PERFORMANCE

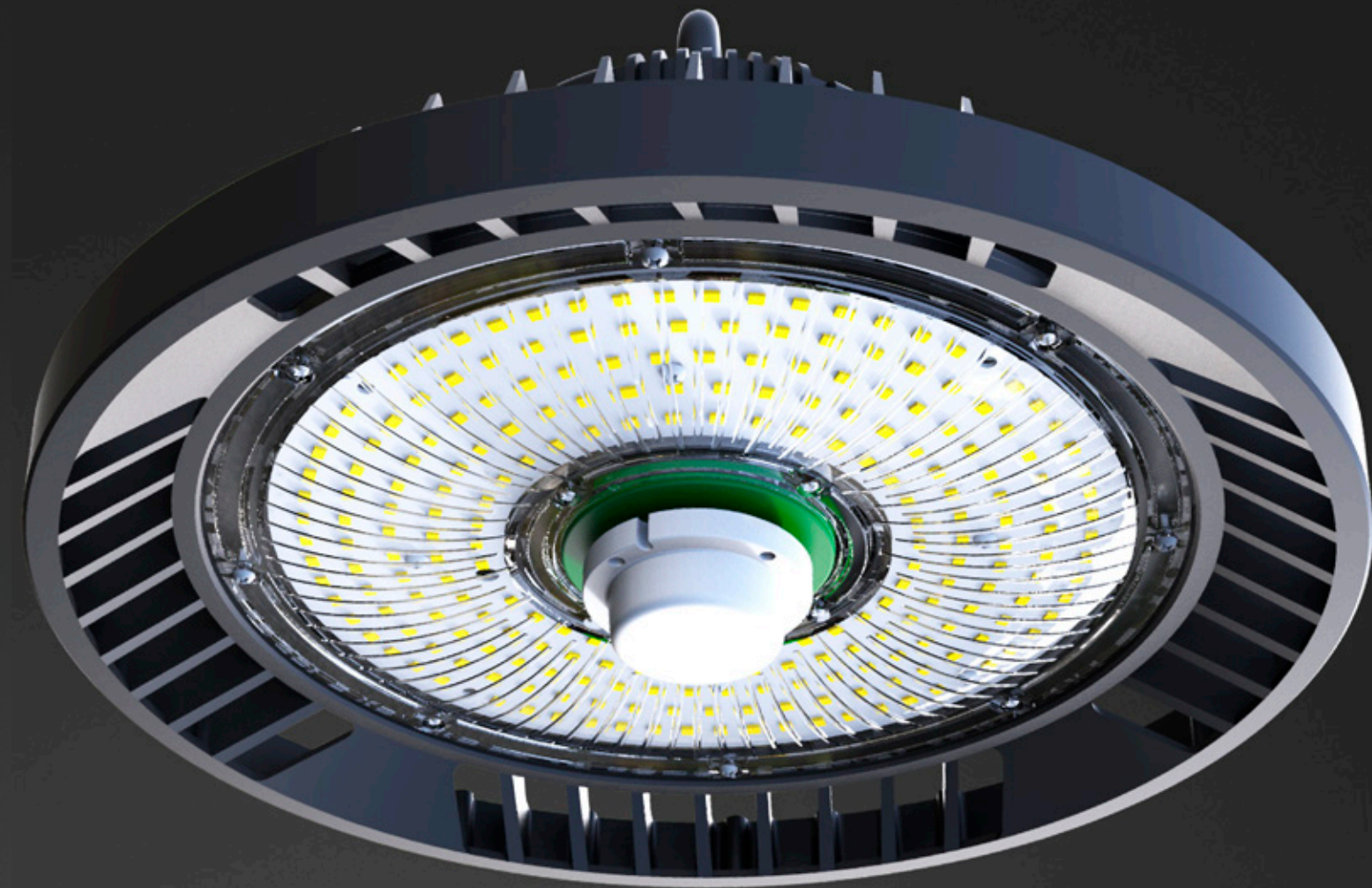
LEDS	Philips Lumileds
CCT	3000K,4000K,5000K
CRI	≥70
L70	L70>120,000 Hours
VAC	100-277 VAC, 100-347 VAC, 277-480 VAC
PF	0.95 min
IP	IP66
IK	IK10
Coat	Corrosive resistant polyester powder coat finish
Temp	Operating Temperature:-45°C to +50°C (-49°F to 122°F) Storing Temperature:-45°C to +80°C (-49°F to 176°F)
RH	15% to 95% RH



SPECIFICATIONS

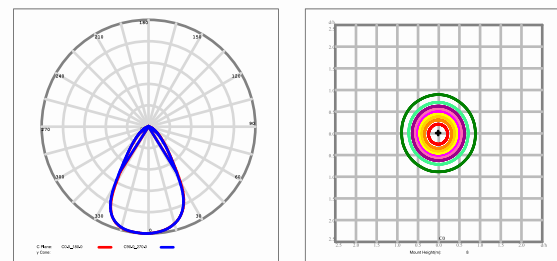
Part#	Power	Efficacy(IES)	Total Lumen	N.W	CRI	LED Chip	Product Dimensions
EL-AUHB-MW (50/80/100)T	50W	160LPW	8,000lm	2.6kg/5.7lbs	≥70	Philips Lumileds	280×280×169mm 11×11×6.7in
	80W	155LPW	12,400lm				
	100W	150LPW	15,000lm				
EL-AUHB-MW (80/100/150)T	80W	160LPW	12,800lm	2.6kg/5.7lbs	≥70	Philips Lumileds	280×280×169mm 11×11×6.7in
	100W	155LPW	15,500lm				
	150W	150LPW	22,500lm				
EL-AUHB-MW (150/180/200)T	150W	155LPW	23,250lm	2.6kg/5.7lbs	≥70	Philips Lumileds	280×280×169mm 11×11×6.7in
	180W	153LPW	27,540lm				
	200W	150LPW	30,000lm				
EL-AUHB-MW (180/200/250)T	180W	152LPW	27,360lm	3.0kg/6.6lbs	≥70	Philips Lumileds	311×311×169mm 12.2×12.2×6.7in
	200W	150LPW	30,000lm				
	250W	145LPW	36,250lm				
EL-AUHB-MW (200/240/300)T	200W	160LPW	32,000lm	5.3kg/11.7lbs	≥70	Philips Lumileds	382×382×182mm 15×15×7.2in
	240W	155LPW	37,200lm				
	300W	150LPW	45,000lm				



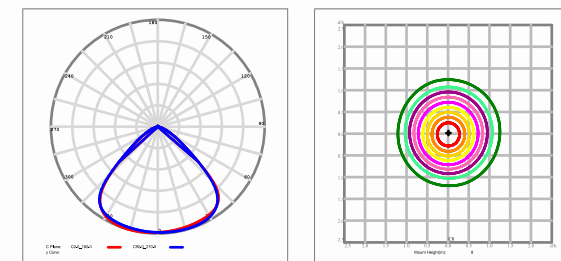


PHOTOMETRICS

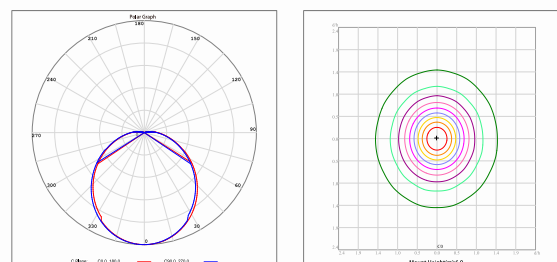
60° Ribbed Lens



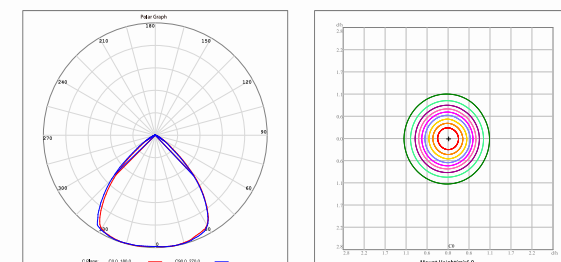
90° Ribbed Lens



120° Diffused Dome Lens



90° Reflector



Future is Now Smart is Easy

Ready socket for universal plug-and-play motion sensor.

Dimming Control



① With sufficient ambient light, the sensor does not switch on the lamp.

Setting
Daylight sensor: 10lux/30lux/50lux;



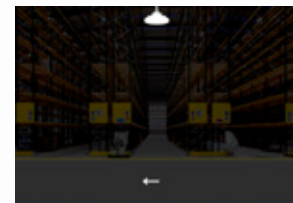
② With a low light level, the sensor switches on the lamp when motion is detected.

Setting
Detection sensitivity:
20%/50%/75%/100%;
Hold-time:
10s/1min/5min/10min/15min/20min/
30min/60min;

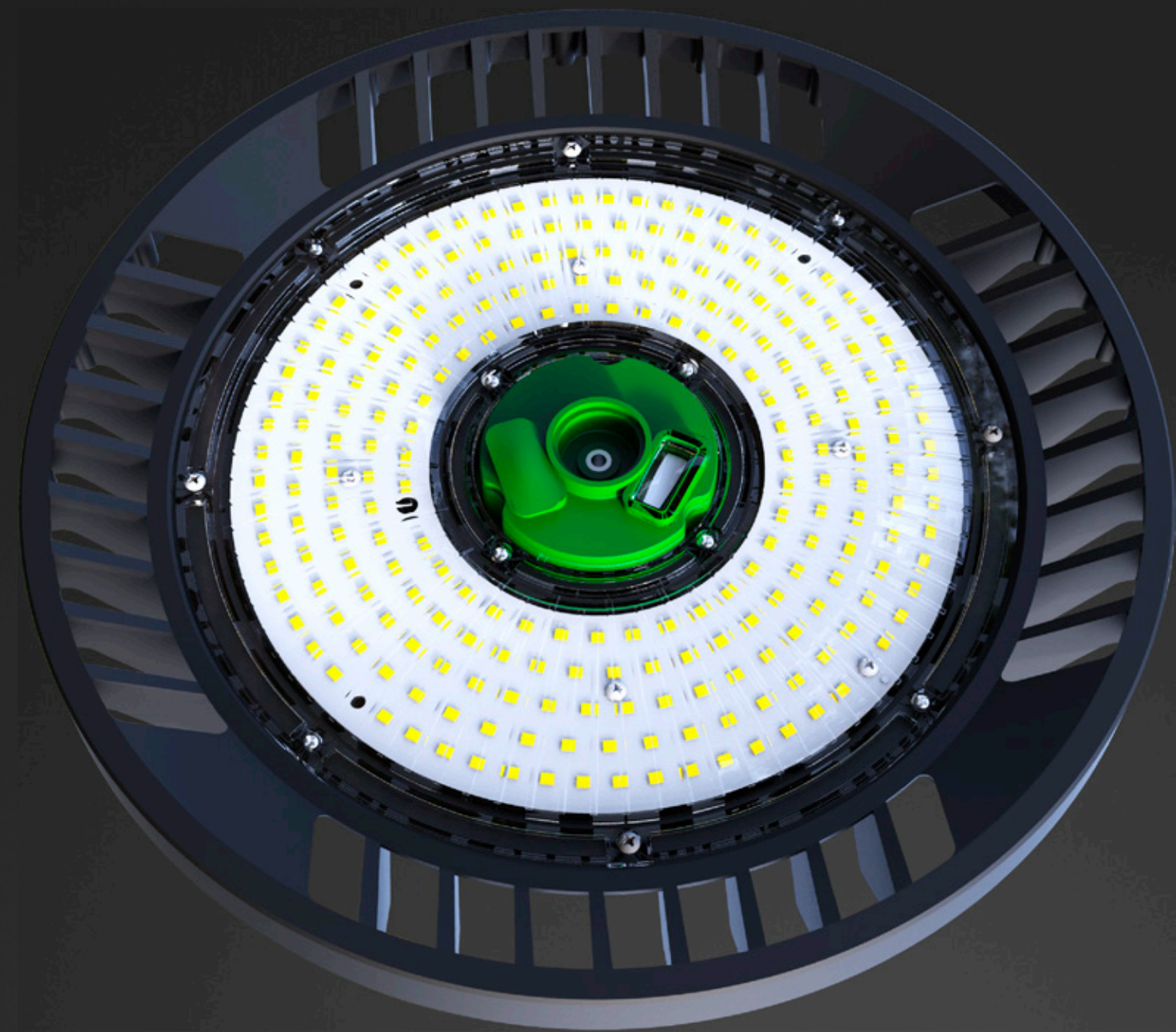


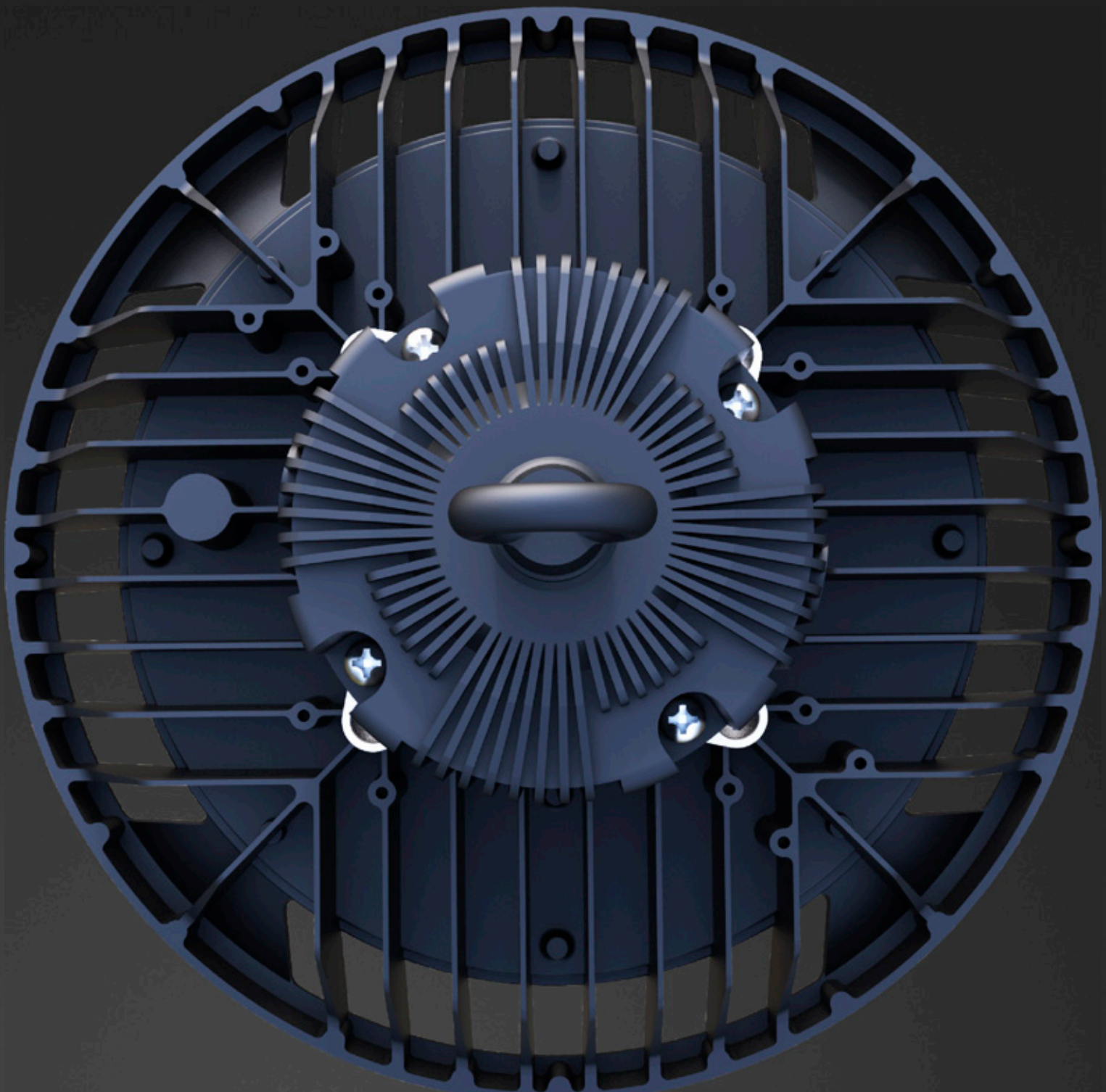
③ After hold time, the sensor dims the lamp at a low light level if no new motion trigger.

Setting
Stand-by dimming level:
0%/10%/30%/50%;
Stand-by period:
1min/30min/60min/+∞



④ After stand-by period, the sensor switches off the lamp if no motion is detected in its detection zone.





INSTALLATION

For high performance and long term reliability, the light should be installed in free air.

Hook Mounting

- Fix the hook on the light. (Clockwise rotation)
- Use an electric drill to bore a hole in the wall.
- Install the hanger to the wall.
- Fix the hook onto the hanger and complete installation.

U Bracket Mounting

- Use an electric drill to bore 2 holes in the wall.
- Set the expansion screws to the existing drilling holes.
- Install the bracket to the wall.
- Use a wrench to reverse hexagon nut adjust the requested angle.



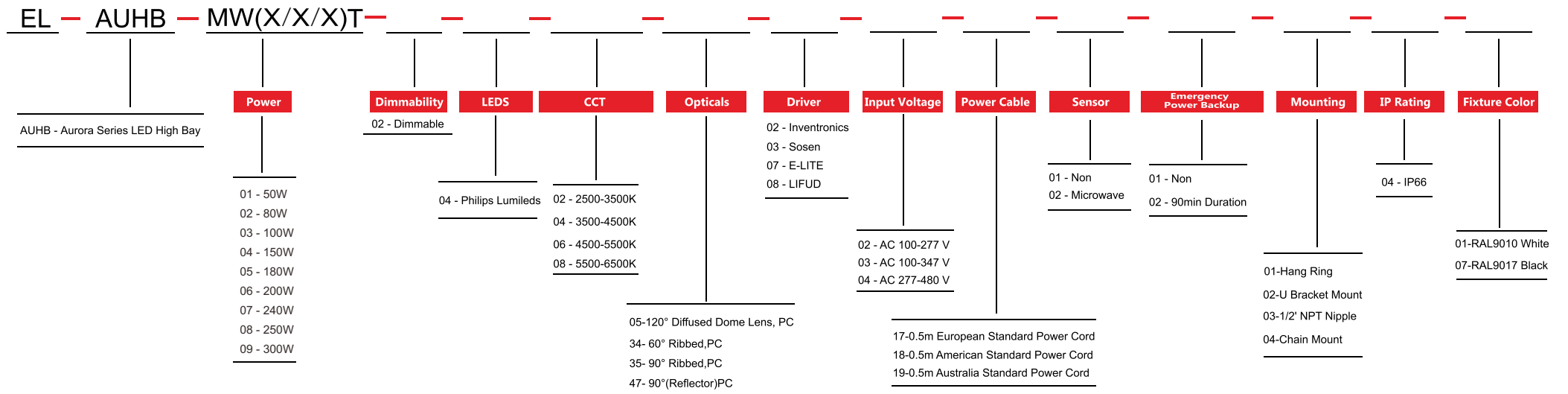
Hook / Hang Ring



Standard U Bracket

ORDERING INFORMATION

E-LITE semicon



E-Lite Semiconductor Co., Ltd.
 Headquarter & Factory
 Website: <http://www.elitesemicon.com>