

Marvo™

LED Flood & Area Light

Multi-Wattage & Multi-CCT Switchable

E-LITE semicon

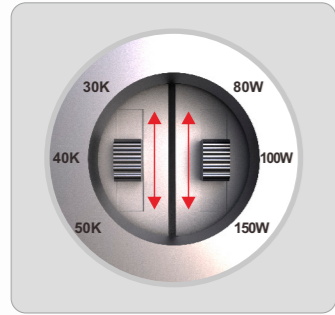




EXTRAORDINARY SKU REDUCTION

Featuring extraordinary SKU reduction with universal mounting, power and color temperature adjustability, the Innovative MARVO™ offers the best value in the Commercial & Industrial Floodlight market.

PRODUCT FEATURES & BENEFITS



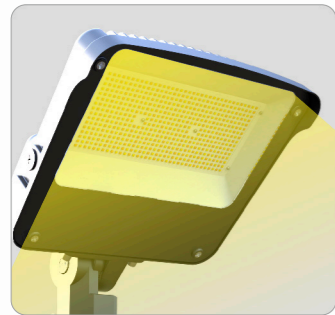
Multi-CCT & Multi-Wattage Switchable
Switchable: 80W-100W-150W
Switchable: 3K-4K-5K



Slim & Sturdy One-piece
Die Cast Aluminum Housing



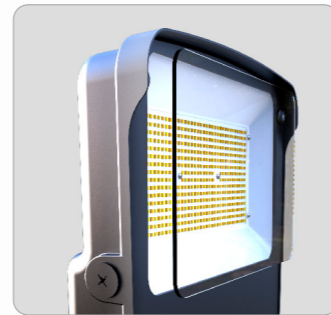
Integrated Visor Reduces
Observable Glare



High Efficacy Up to 160LPW



High-reflectance white reflector
maximizes output



Tempered glass lens won't yellow



Photocell





PERFORMANCE



Philips Lumileds



3000K,4000K,5000K



≥70



L70>120,000 Hours



100-277 VAC



0.95 min



IP66



IK08



Corrosive Resistant Polyester Powder



Tempered Glass



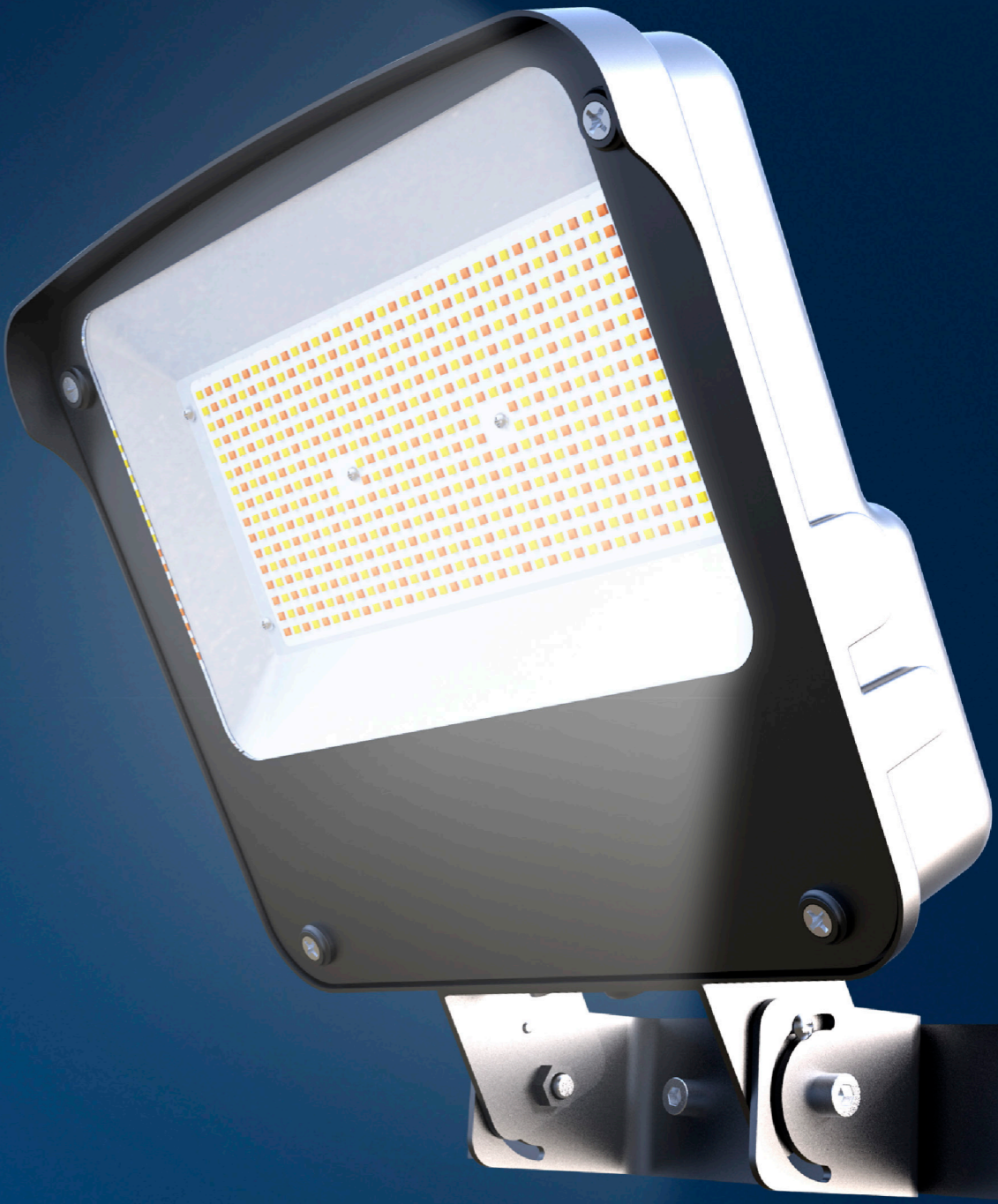
Operating Temperature:-45°C to +45°C (-49°F to 113°F)
Storing Temperature:-45°C to +80°C (-49°F to 176°F)

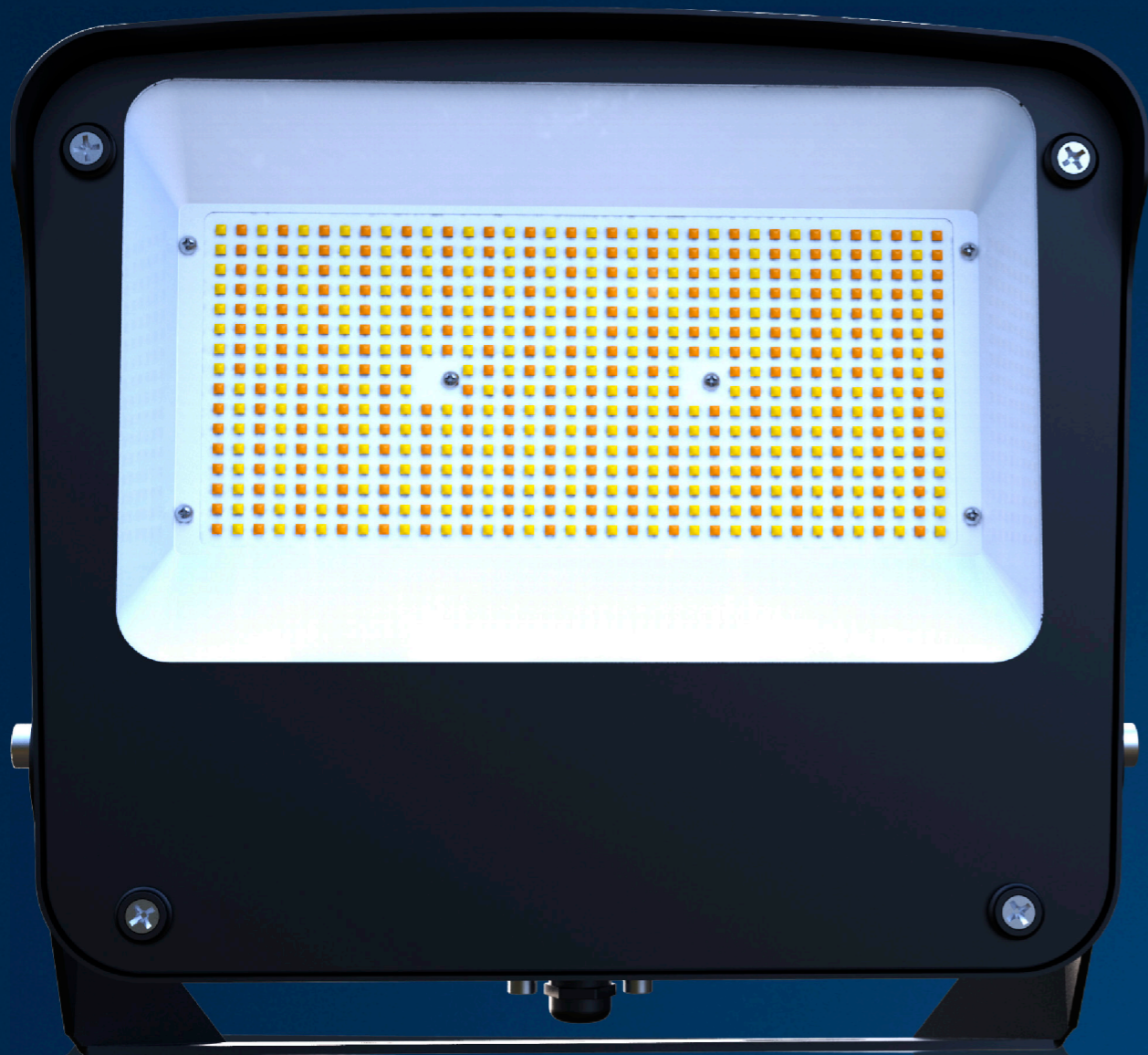


15% to 95% RH

SPECIFICATIONS

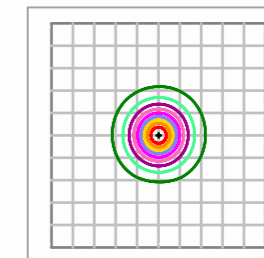
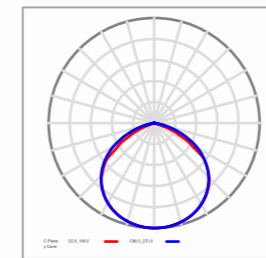
Part#	CCT	Power	Efficacy(IES)	Total Lumen	N.W	Product Dimensions
EL-MVFL-MW (80/100/150)T-MCCT (30K/40K/50K)	5000K	150W	140LPW	21,000lm	3.5kg / 7.7lbs	338.5×323×80mm 13.3×12.7×3.15in
		100W	148LPW	14,800lm		
		80W	150LPW	12,000lm		
	4000K	150W	150LPW	22,500lm		
		100W	158LPW	15,800lm		
		80W	160LPW	12,800lm		
	3000K	150W	135LPW	20,250lm		
		100W	143LPW	14,300lm		
		80W	145LPW	11,600lm		





PHOTOMETRICS

120°



LED Landscape Reference Guide

◆ 150W REPLACES 400W MH

Commercial buildings, parking lots, flag poles, tall palms, all security and area lighting.



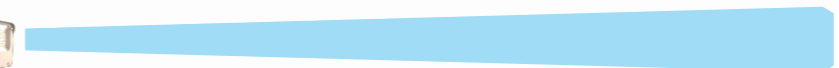
◆ 100W REPLACES 250W MH

Commercial buildings, parking lots, flag poles, tall palms, all security and area lighting.



◆ 80W REPLACES 150W MH

Residence apartment buildings, small alleyways, and landscape lightings.



INSTALLATION

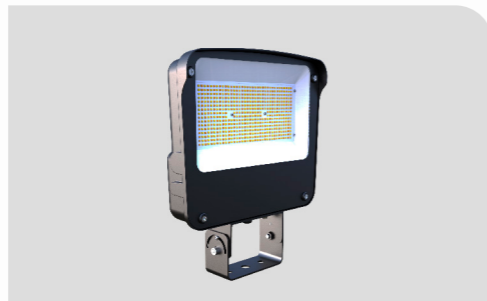
For high performance and long term reliability, the light should be installed in free air.

Universal Hanging Bracket

1. Rotate the bracket to the desired angle and tighten screw to lock it.
2. Bolt the universal mounting bracket to the field mounting point. Bolt the center point before the two side points. Tighten the bolts to wrench tight.
3. Wiring. (Connect supply wires to luminaire wire leads per the wiring diagram using methods that comply with all applicable codes.)



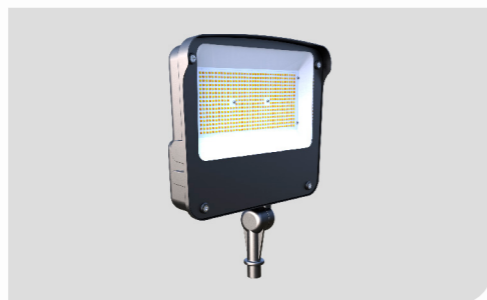
U Bracket Mount



Trunnion



Slip Fitter



Knuckle



ORDERING INFORMATION

