

Marvo™

LED Flood & Area Light

Multi-Wattage Switchable

E-LITE semicon

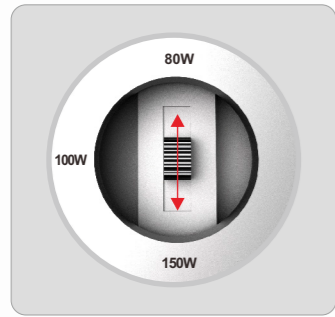




EXTRAORDINARY SKU REDUCTION

Featuring substantial SKU reduction with universal mounting and power adjustability, the innovative MARVO™ offers the best value in the commercial & industrial floodlight market.

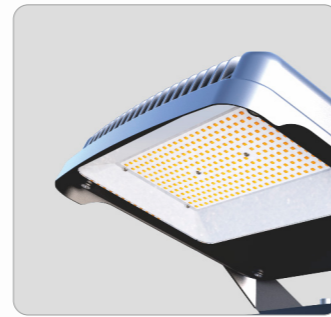
PRODUCT FEATURES & BENEFITS



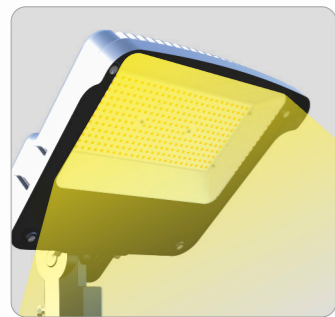
Multi-Wattage Switchable
Switchable: 80W-100W-150W



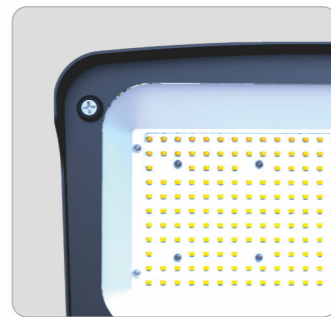
Slim & Sturdy One-piece
Die Cast Aluminum Housing



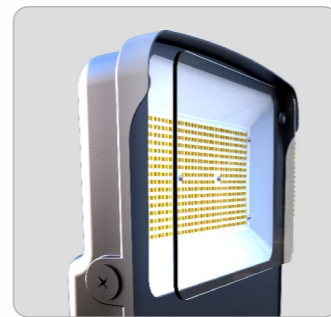
Integrated Visor Reduces
Observable Glare



High Efficacy Up to 150LPW



High-reflectance white reflector
maximizes output



Tempered glass lens won't yellow



Photocell



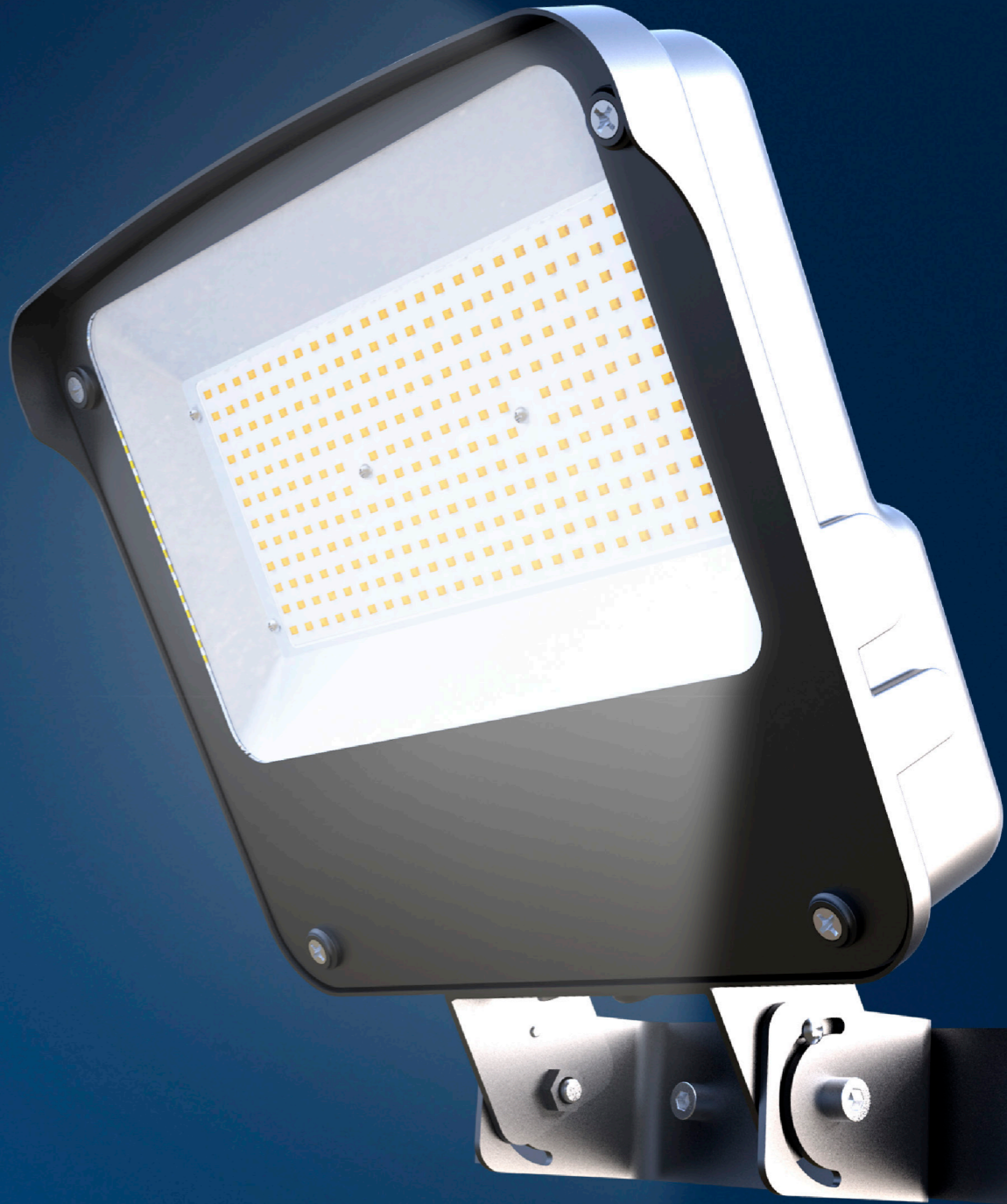


PERFORMANCE

LEDS	Philips Lumileds
CCT	4500~5500K (Standard) 2500~6500K (Optional)
CRI	≥70
L70	L70>120,000 Hours
VAC	100-277 VAC
PF	0.95 min
IP	IP66
IK	IK08
Coating	Corrosive Resistant Polyester Powder
Glass	Tempered Glass
Temp	Operating Temperature:-45°C to +45°C (-49°F to 113°F) Storing Temperature:-45°C to +80°C (-49°F to 176°F)
RH	15% to 95% RH

SPECIFICATIONS

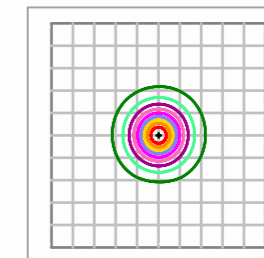
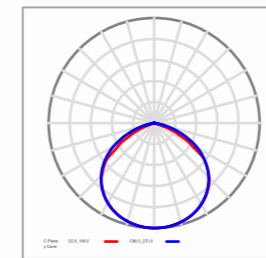
Part#	Power	Efficacy(IES)	Total Lumen	N.W	Product Dimensions
EL-MVFL-MW (80/100/150)T	150W	140LPW	21,000lm	3.5kg / 7.7lbs	338.5×323×80mm 13.3×12.7×3.15in
	100W	148LPW	14,800lm		
	80W	150LPW	12,000lm		





PHOTOMETRICS

120°



LED Landscape Reference Guide

◆ 150W REPLACES 400W MH

Commercial buildings, parking lots, flag poles, tall palms, all security and area lighting.



◆ 100W REPLACES 250W MH

Commercial buildings, parking lots, flag poles, tall palms, all security and area lighting.



◆ 80W REPLACES 150W MH

Residence apartment buildings, small alleyways, and landscape lightings.

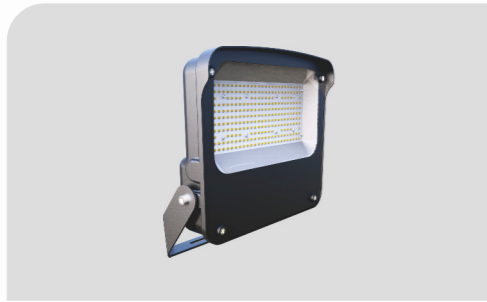


INSTALLATION

For high performance and long term reliability, the light should be installed in free air.

Universal Hanging Bracket

1. Rotate the bracket to the desired angle and tighten screw to lock it.
2. Bolt the universal mounting bracket to the field mounting point. Bolt the center point before the two side points. Tighten the bolts to wrench tight.
3. Wiring. (Connect supply wires to luminaire wire leads per the wiring diagram using methods that comply with all applicable codes.)



U Bracket Mount



Trunnion



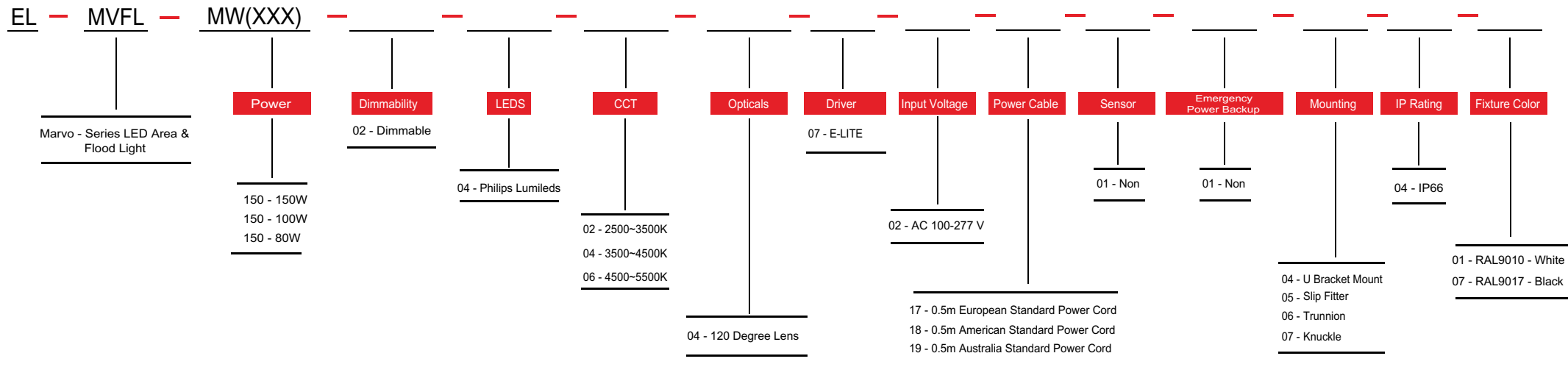
Slip Fitter



Knuckle



ORDERING INFORMATION



E-Lite Semiconductor Co., Ltd.
 Headquarter & Factory
 Website: <http://www.elitesemicon.com>